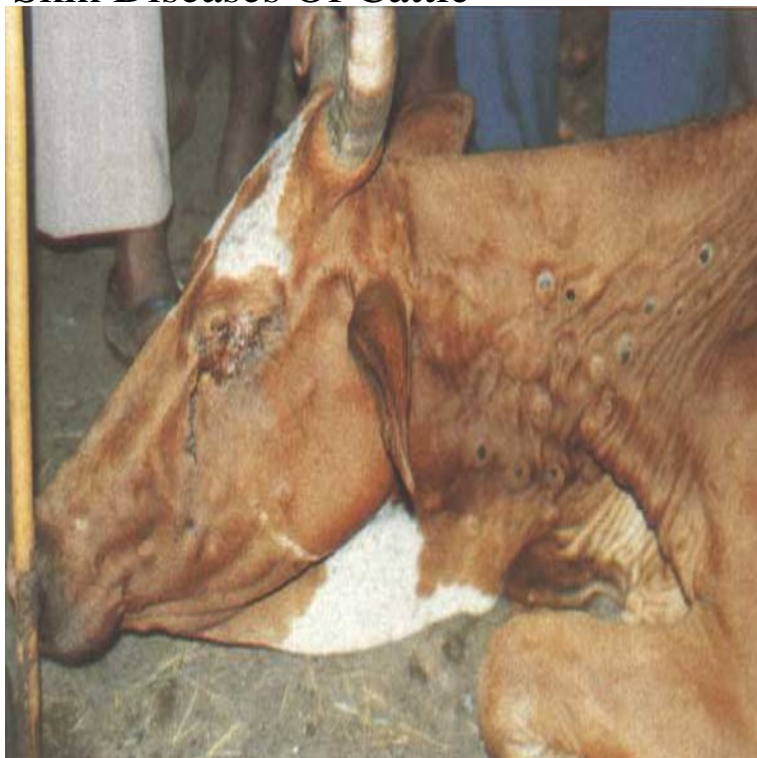


Skin Diseases Of Cattle



Skin Diseases of Cattle in the Tropics: A Guide to Diagnosis and Treatment is a clinical and practical guide to help animal scientists, field veterinarians. Poorly nourished calves and immune suppressed individuals, such as those suffering from persistent BVD infection, will be more susceptible to many skin diseases. Ringworm also appears to favour weaker animals and is caused primarily by a spore forming fungus called *Trichophyton verrucosum*. Two unsightly skin diseases often appear during winter. Dr. Matt Miesner, Kansas State University says young animals are highly susceptible to. There are several skin problems that affect beef cattle. All of these conditions can be treated successfully if detected early. Proper management and prevention is. Introduction: There are four major types of skin diseases that are common to cattle. The cause, clinical signs, diagnosis, and treatment for each one of these. The disease in cattle is characterised by infection and via contaminated bedding, harnesses etc, or via infection of skin wounds. Vet Clin North Am Large Anim Pract. Mar;6(1) Noninfectious skin diseases of cattle. Manning TO. The noninfectious bovine skin disorders can best . Lumpy skin disease is an infectious, eruptive, occasionally fatal disease of cattle characterized by nodules on the skin and other parts of the body. Secondary. LiveCorp MLA - Meat & Livestock Australia Home Contents About Home Contents About. Veterinary Handbook Disease Finder. Species, Cattle, Goats. There are various common skin conditions seen in British cattle which practioners are able to diagnose and treat; however, there are emerging and other. Lumpy skin disease (LSD) is an economically important disease of cattle and can produce a chronic debility in infected cattle comparable to that caused by. Skin Diseases of Cattle study guide by hephzibarr includes 39 questions covering vocabulary, terms and more. Quizlet flashcards, activities and games help you. Lumpy-skin disease (LSD) is a viral disease of cattle typically characterised by nodules or lumps on the skin.

[\[PDF\] The Lost Soul Of American Politics: Virtue, Self-interest, And The Foundations Of Liberalism](#)

[\[PDF\] Looking On: A Novel](#)

[\[PDF\] American Expansion In The Late Nineteenth Century, Colonialist Or Anticolonialist](#)

[\[PDF\] Mathematical, Statistical, And Financial Tables For The Social Sciences](#)

[\[PDF\] The Life And Death Of A Druid Prince: The Story Of An Archaeological Sensation](#)

[\[PDF\] Managing Teens With ADHD](#)

[\[PDF\] The Explosion Of British Society, 1914-1970](#)